



UNIT A: BMC CONTROL-M WORKLOAD AUTOMATION REVIEW

- Key Learnings Review from the BMC Control-M Workload Automation Essentials Course
 - BMC Control-M Capabilities
 - BMC Control-M Architecture
- Advanced Workload Automation Concepts
 - Workload Element Types
 - Batch Business Service Level Management
 - Predictive Analysis
 - Dynamic Resource Control and Awareness
 - Cloud and Virtual Computing

UNIT B: ADVANCED WORKLOAD MONITORING

- Review of the Monitor Domain
- Workload Management by Exception
 - Viewpoints and Filters
 - Workload Alerts
 - Navigating the Alert Tab
- Detailed Review of the Tools Tab
- Detailed Review of the Analysis Tab

UNIT C: ADVANCED WORKLOAD MANAGEMENT

- BMC Control-M Global Conditions
 - Use Cases
 - Defining Global Condition Prefixes in the Monitor Domain
- BMC Control-M Resources
 - Use Cases
 - Control Resources
 - Quantitative Resources
 - Monitoring and Managing Resources in the Monitor Domain
- Overview of BMC Control-M Workload Policies
 - Use Cases
 - Workload Policy Monitor in the Monitor Domain

UNIT D: ADVANCED WORKLOAD ADMINISTRATION VIA THE PLANNING DOMAIN

- Review of the Planning Domain
- Review of Managing Workloads
 - Folders
 - Jobs
 - Changing Existing Workloads
- Detailed Review of the Tools Tab
 - Creating and Managing Workload Folders
 - Workload Version Manager
 - Identifying Changes at the Job and Collection Level
 - Restoring Earlier Versions of Jobs and Collections

- Building Workload Templates
- Calendar Management
- Managing Conditions and Resources
- Workspace and File & Folder Management
- Creating and Activating Workload Policies
- Overview of Service Definitions
- Managing Periodic Statistics

UNIT E: ADVANCED WORKLOAD SCHEDULING VIA THE PLANNING DOMAIN

- Detailed Review of the General Tab
- Detailed Review of the Scheduling Tab
- Detailed Review of the Prerequisites Tab
- Detailed Review of the Actions Tab
- Hands-on Exercises

UNIT F: AUTO-EDIT VARIABLES

- Use Cases
- Reserved Variables
- User Defined Variables
- Boolean Logic If/Then/Else Instructions
- Referencing Variables in Schedules
- Referencing Variables in Scripts and JCL
- Referencing Variables in Messages and Alerts
- Setting and Referencing Variables via Programs
- Hands-on Exercises

UNIT G: THE REPORTING FACILITY

- Review of the Reporting Facility
- Overview of Reports
 - General Reports
 - History Reports
 - Auditing Reports
- Creating New, Custom Reports
- Report Export Options
- Review of Cetan Corp Recommended Best Practice Reports
- Building Control-M Report Jobs
- Hands-on Exercises

UNIT H: BMC CONTROL-M UTILITIES

- Overview of Common Utilities
- BMC Control-M Enterprise Manager Utilities
- BMC Control-M Server Utilities
- Hands-on Exercises

UNIT I: ADVANCED INTEGRATION VIA APPLICATION PLUG-INS

- Overview of Application Plug-Ins
- Common Use Cases
- Building & Leveraging BMC Control-M Job Types for:
 - iSeries
 - Tandem
 - SAP R3
 - SAP BW
 - SAP Business Objects
 - SAP Data Archiving
 - PeopleSoft
 - Informatica
 - Oracle eBusiness Suite
 - Oracle Business Intelligence
 - IBM Cognos
 - Cloud Computing
 - Storage
 - Big Data (Hadoop)
 - Hands-on Exercises
- BMC Control-M for Databases
 - Use Cases
 - Queries
 - Stored Procedures
 - SSIS Packages
 - Hands on Exercises
- BMC Control-M for Advanced File Transfer
 - Use Cases
 - Building File Transfer Jobs
 - Hands-on Exercises
- BMC Control-M Business Process Integration Suite
 - Use Cases
 - Building Web Services Jobs
 - Calling Control-M Functions via Web Service
 - Building Messaging Jobs
 - Building Java Jobs
 - Hands-on Exercises

UNIT J: BATCH SERVICE LEVEL MANAGEMENT AND FORECASTING

- Business Services & the BMC Batch Impact Manager
 - Business Service Concepts & Use Cases
 - BMC Batch Impact Manager Introduction
 - Identifying Batch Business Service Requirements
 - Control-M Batch Impact Manager Job Definition
 - Monitoring Batch Business Services via the Service Monitor tab
 - Navigating Batch Business Services via Services Viewpoints
 - Batch Impact Manager Reports
 - Hands on Exercises
- BMC Control-M Forecast
 - BMC Control-M Forecast Overview
 - Batch Workload Forecast Types
 - Navigating the Forecast Domain and Tabs
 - Building and interpreting 'What If' Scenarios
 - Forecast Reports
 - Hands on Exercises

UNIT K: BMC CONTROL-M SELF SERVICE

- Self Service Overview
- Common Terminologies
- Navigating the Self Service Interface
- Services and Orderable Services
- Defining Services via the Planning Domain
- Defining Orderable Services via the Planning Domain
- Hands-on Exercises

UNIT L: TYING IT ALL TOGETHER – EXTENDED HANDS-ON ROLE PLAY SCENARIO

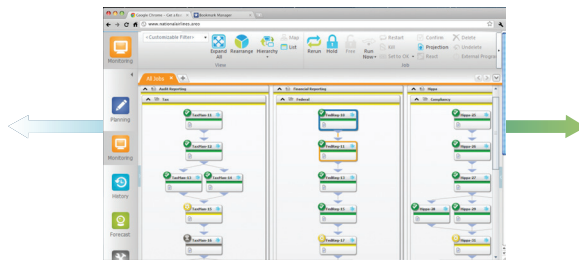
UNIT M: CONVERTING WORKLOADS FROM OTHER TOOLS

- Conversion Process Overview
- BMC Control-M Conversion Tools & Utilities
 - Windows Conversion Tool
 - z/OS based Conversion Tools

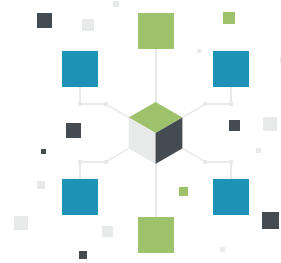
IMPROVE PRODUCTIVITY WITH BMC CONTROL-M



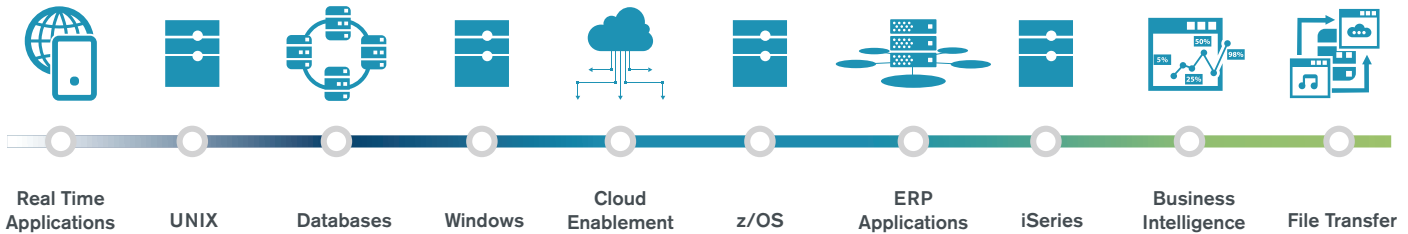
YOUR TECHNOLOGY



BMC CONTROL-M



YOUR ENTERPRISE



START YOUR TRAINING TODAY

Get the most out of your BMC Control-M solution by **ensuring faster adoption and full usage**. Contact us to discuss ways in which Cetan Corp's proven Training and Enablement strategies can empower your team to soar to new heights with BMC Control-M. Visit www.cetancorp.com or call **877.423.8260**.

ABOUT CETAN CORP:

Cetan Corp is an enterprise IT solutions provider specializing in cloud, collaboration and workload automation software and professional services. We help growing, innovative organizations, large corporations and federal agencies achieve meaningful business results using industry-leading tools from Microsoft, Salesforce.com and BMC Software. Cetan Corp is a Native American, Veteran-Owned company, GSA Schedule #GS-35F-163BA. Learn more at www.cetancorp.com.